

ELEVO HUB

In an increasingly competitive ecosystem, emerging start-ups face unique challenges as they try to establish themselves in the market.

To address these needs, Elemaster presents **Elevo Innovation Hub, a strategic hub designed to support start-ups on their path of growth and development.**

Elevo Hub is dedicated to collaborating with start-ups, **supported by Universities and Incubators** providing resources, know-how and technical support to facilitate their entry into the market.

Elevo Hub not only offers tailored technical support but also fosters a collaborative learning ecosystem, where experiences and knowledge are shared creating a cross fertilization environment, synergies and networking opportunities.

Through this initiative, Elemaster demonstrates its commitment to innovation and sustainability, investing in the future of the next generation of entrepreneurs.

Contacts

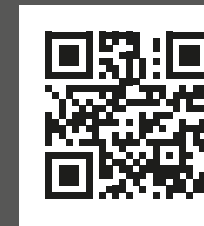
EUROPE - Headquarters
Via Garcia Lorca, 29
23871 Lomagna (LC) - Italy
Phone: +39 039 9394 200

UNITED STATES
3400 Rivergreen Court, Suite 200
Duluth, 30096
Georgia - Stati Uniti
Phone: +1 470-410-2557

CHINA
No258 ZhiJiang Road
Building # 6-2 Fengxian District
201401 Shanghai - China
上海市奉贤区芝江路258号, 欧洲中小企业园, 6-2幢
Phone: +86 021 3719 9059

INDIA
Unit -3
Plot No : B-15, C-4, Phase I,
MEPZ – SEZ, Tambaram,
Chennai – 600 045 – India

TUNISIA
7026 El Azib - Menzel Djemil km.9
7026 Bizerte - Tunisia
Ph: +216 7245 1161 146



ELEVO

ELEMASTER INNOVATION PATH

 **ELEMASTER®**

Your Partner for innovation

ELEVO.TECH

ELEVO

ELEMASTER INNOVATION PATH

Elevo is the **Elemaster's Innovation Path**, transforming Customers' visions into reality in the dynamic world of innovation.

'We Grow Your Ideas': Elevo represents the strong commitment of Elemaster to rise creativity and innovation, ensuring that your ideas are translated into innovative and successful solutions.

Elevo will support you at every stage, from **Design to Product Industrialization, Certification, and beyond, including After-Sales Maintenance and Obsolescence Management.**

Customers have access to customised consultancy, with specific resources and expertise, and can leverage on Elemaster specific competences on the most high-tech market sectors (Railways and Transport, Medical, Energy, Robotics, Avionics and Defence).

From small start-ups to market leaders, whether it is an embryonic idea or a product already at the commercialisation stage, Elevo aims to offer a set of services customised to Customers' specific stage of development, to meet the challenges of the market and ensure effective positioning,

exploiting the latest innovation trends and being always at the cutting edge of technology.

At Elemaster, Elevo is not just a service – it's your road to the future: a true high technology partnership, aiming to create together the sustainable innovation in the electronics landscape.

We grow your ideas

ELEMASTER INNOVATION HUB

ELEVO

ELEMASTER INNOVATION PATH

1 Research & Development

The Elemaster **International Design Centers**, R&D Division at the forefront thanks to the highly professional skills of more than 100 professionals encompassing system-, hardware-, PCB layout-, software-, mechanical and test engineers, excel in the comprehensive development and redesign of electronic devices and appliances, using best EDA (Electronic Design Automation) tools available.



2 HW & SW Development and Ecodesign

The hardware design team works in synergy with the software team, taking advantage of the latest technological solutions and taking care of development and updating throughout the product's life-cycle. Following Ecodesign directive, our engineering team provides innovative, green and future-ready solutions in electronics.



3 Industrialization DFT + DFM + DTC Value Engineering

Thanks to Design For Testability, Design For Manufacturability and Design To Cost stages, we ensure all future testing and production operation to be the most efficient ones. Through excellent organization, both in terms of manufacturing and production flow strategies inspired by lean methodologies, we can minimize production costs and easily monitor our industrial processes.



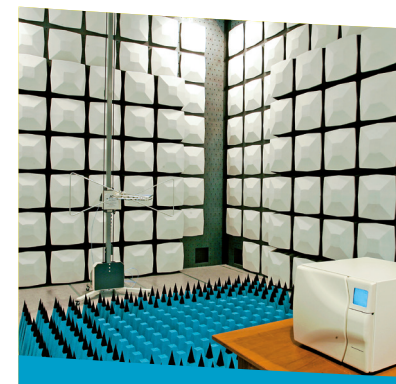
4 Rapid Prototyping

We specialised in rapid prototyping, ensuring constant communication and quick responses to your needs. We have a manufacturing facility in Northern Italy entirely dedicated to prototypes and innovation. We also manage The New Product Introduction (NPI) activity, to carry out a reliable and repeatable assembly and testing process to place products on the market in rapid times and in a competitive way.



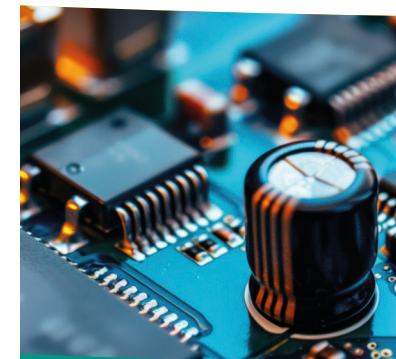
5 Validation and Certification

We use our laboratories for validation processes and for the certification of your products. All certification processes are overseen and guaranteed by TÜV Rheinland Group, leading company in the industry. EMC, climatic, insulation, vibration and shock tests are accredited to the International Standard ISO/IEC 17025:2017 (Eletech Lab) and in addition, we also have a laboratory entirely dedicated to PCB certification and validation, located at Eleprint, our PCB dedicated inhouse company.



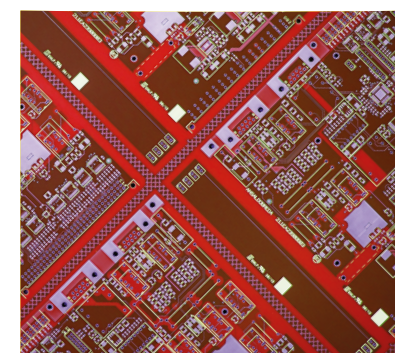
6 Obsolescence Management

Evolutionary Maintenance and Obsolescence Management mean being proactive and thinking about obsolescence from the beginning. By a dedicated holistic approach, which also integrates the quality control of the products, Elemaster keeps them up to date, extending their service life and ensuring their compliance with important environmental standards. In this way, the longer life of the device allows it to be produced for more years, remaining competitive.



7 PCB Production

With over 35 years of experience, we provide comprehensive solutions for your Printed Circuit Boards, offering solid experience, cutting-edge expertise and flexibility. We stand out in the competitive scenario as PCB provider with our own company, covering the entire life cycle of the circuit from the idea to the finished product. To guarantee the best quality, an internal laboratory is available to carry out metallographic sections, chemical tests, TMA and electrical tests, as well as non-destructive tests.



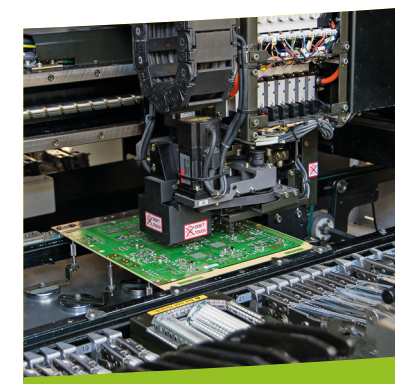
8 Wiring Harnesses

Elemaster has a division, located in the factory in Romania, dedicated to the production of wiring harnesses. With a manufacturing area around 1.800m2 dedicated only to cable production with full automatic and semi-automatic machines we can cover a wide range of applications. With our cable scan TSK solutions we can test connections and protection against short circuits. Copper, Flat, Coaxial, Battery cables for all types of signal, power supply and HF: all you need, we have it!



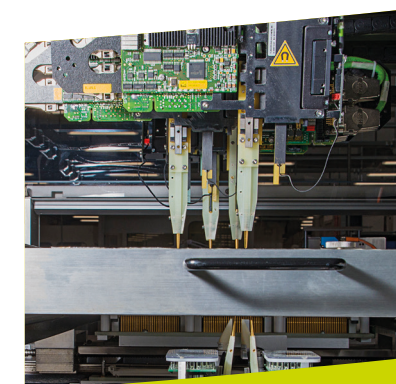
9 PCB Assembly

We use state-of-the-art technology for the automated assembly of SMD components. These include the Solder Paste Inspection (SPI), Automatic Optical Inspection (AOI) and X-Ray Inspection. Moreover, Elemaster offers THT assembly service using both manual and automatic assembly lines with waves and selective soldering machines, to ensure great flexibility. Each production site has also fully dedicated departments for conformal coating process, complete with drying and temperature-humidity climate control facilities. Elemaster offers you the best automatic selective coating.



10 Testing and Controls

Elemaster offers different testing solutions to guarantee customers the full functionality of the products and maximum reliability over time. We have advanced equipment for the In-Circuit Tests (ICT) with Bed of Nails technology or with Flying Probes. The process, integrated with the phases of On-Board Programming and Boundary Scan (JTAG), ensures maximum production quality.



11 Functional Test - Eletest

The Test Engineering Team can develop functional testing equipment according to the specifications required by the Customer. The pride of the department is ELETEST, a complete and flexible solution able to meet the most complex needs. The hardware can be customized according to the all needs. The machine has been designed to have a standard configuration that can be used on multiple products.



12 Turnkey Solutions

We also manage the final stages of construction of your products to perfection, such as electromechanical assembly, wiring and additional components integration with the "Free Pass" process. We offer a "turnkey" service of products fully assembled and tested, thanks to its extreme flexibility, considered as the ability to create products for very different sector applications.



13 Logistic and Repair Center

We globally manage the Logistic & after-sales by:

- direct shipments to distribution centers;
- spare parts management in High-mix Low-Volume;
- technical assistance and Product Refurbishment;
- a skilled Repair Center with diagnostic and repairing competences.

